



# Classroom Safety

**WSSCA  
44<sup>th</sup> Annual  
School Safety and Security Conference**

**Jessica Schroeder  
Environmental, Health & Safety Program Team Leader**

# Overview

- ❖ Classroom safety topics
- ❖ Strategies applicable for teachers, students, custodial/maintenance staff
- ❖ Topics from fire prevention to storage issues
- ❖ Develop safety culture, promote ownership
- ❖ Safety checklist
- ❖ Best practices
- ❖ Questions & Answers



# Animals

- ❖ Animals in your classrooms
- ❖ District policy
- ❖ Parents notified
- ❖ Care, clean-up
- ❖ Liability



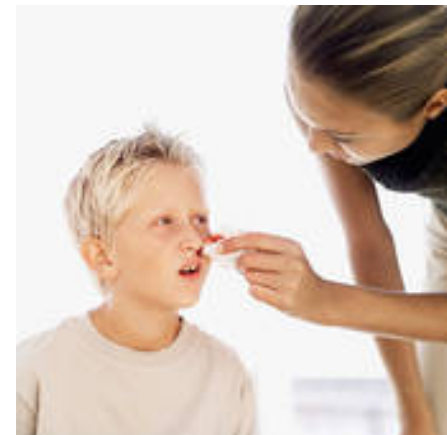
# Appliances

- ❖ District policy for appliances
- ❖ Items from home
- ❖ Plug in procedures
- ❖ Locations



# Bloodborne Pathogens/ First Aid

- ❖ Spill kits, First aid kits, PPE in each room
- ❖ Procedures for incidents
- ❖ Proper training for clean-up
- ❖ Containing spills
- ❖ Waste containment
- ❖ Allergies, medical conditions
- ❖ Accident reporting



# Electrical Safety

- ❖ Extension cords
- ❖ Damaged items
- ❖ Where are items coming from
- ❖ Rated for industrial use
- ❖ Proper plug-in procedures
- ❖ Consider the environment



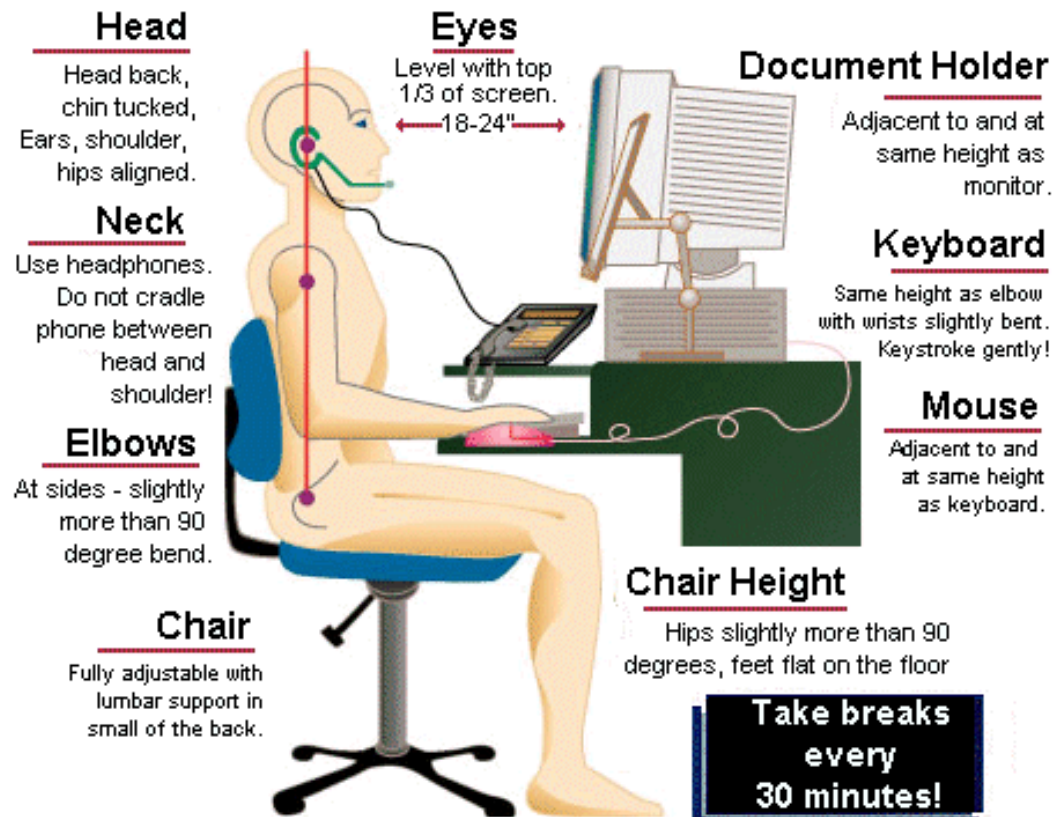
# Emergency Response

- ❖ Fires, tornadoes, chemical release, intruders,
- ❖ Current plan available, provide training
- ❖ Communicate responsibilities
- ❖ Follow district plan
- ❖ Head counts
- ❖ Meeting location
- ❖ Review drills and incidents



# Ergonomics

- ❖ Design
- ❖ Safety
- ❖ Comfort
- ❖ Efficiency
- ❖ Ease of use



# Eyewash Stations

- ❖ OSHA requirement with exposure to corrosive materials
- ❖ Compliance with ANSI Standard Z358-1-2009
- ❖ Proper installation
- ❖ Proper visibility and signage
- ❖ Flushing fluid temperatures and applications
- ❖ Unit maintenance and inspections



# Fire Safety

- ❖ Fire prevention and extinguisher training
- ❖ Location of extinguishers
- ❖ Potential fire hazards
- ❖ Candles
- ❖ Accountability
- ❖ Team with:
  - fire inspector, insurance company, consultants



# Food

---

- ❖ Food in your classrooms
- ❖ Proper storage
- ❖ Is it necessary



# Hazard Communication

- ❖ Chemicals in your classrooms
- ❖ Chemicals needed
- ❖ Chemicals from households
- ❖ Supply list requests
- ❖ Proper storage, disposal
- ❖ Location of MSDS
- ❖ PPE available



# Housekeeping

- ❖ 15 second rule
- ❖ Clean-up of spills
- ❖ Slip and trip hazards
- ❖ Accumulation of combustibles
- ❖ Access to exits, extinguishers, eyewashes
- ❖ Ownership



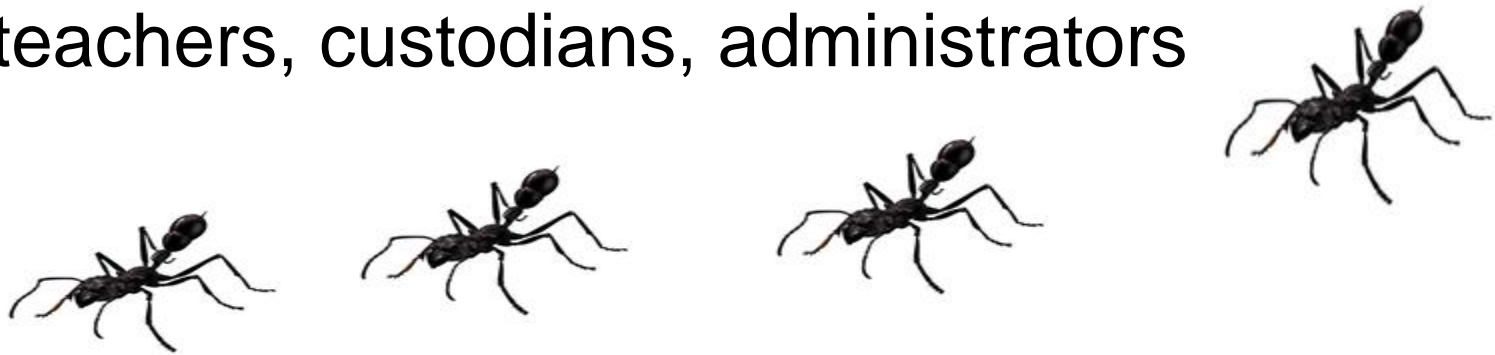
# Indoor Environmental Quality

- ❖ Location of classroom
- ❖ Mechanical equipment
- ❖ Supply and return of air
- ❖ Animals, plants, furniture in classroom
- ❖ Moisture
- ❖ Chemicals
- ❖ Fragrance



# Integrated Pest Management (IPM)

- ❖ Pests in your classrooms
- ❖ Reason
- ❖ Treatment
- ❖ Rules
  - teachers, custodians, administrators



# Ladders

- ❖ Ladder usage
- ❖ Types of ladders
- ❖ Inappropriate ladder alternatives
- ❖ Step stool availability, locations
- ❖ Right tool for job
- ❖ Inspections



# Lifting

- ❖ Why does the lifting occur
- ❖ Equipment provided
- ❖ Procedure in place
- ❖ Accident reporting
- ❖ Training provided



# Security

- ❖ Plan in place
- ❖ Exit doors
- ❖ Classroom door windows
- ❖ Report unaccompanied strangers



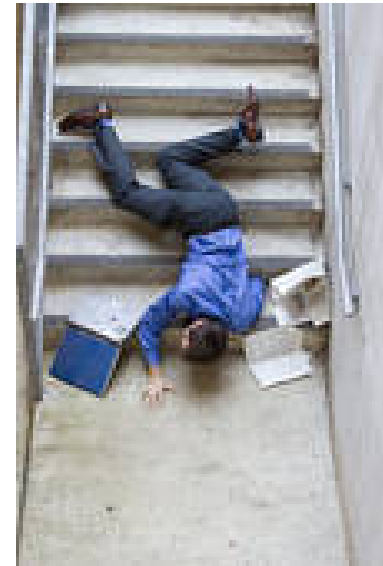
# Storage

- ❖ Proper storage
- ❖ Unit ventilators
- ❖ Cupboards
- ❖ Centralized storage
- ❖ Organization



# Walking Working Surfaces

- ❖ Proper footwear
- ❖ Reporting process
- ❖ Limit load
- ❖ Avoid short cuts
- ❖ Slow down
- ❖ Pay attention



# Everyone is Responsible

- ❖ Safety culture in your district
- ❖ Teachers take ownership
- ❖ Accountability





# Questions & Answers

**Jessica Schroeder**

**[jschroeder@cesa10.k12.wi.us](mailto:jschroeder@cesa10.k12.wi.us)**

**1.888.947.4697**